

Hangzhou Xixi Building Co., LTD.



CUSTOMIZED BUILDINGS



www.cbcprefab.com
www.prefabbuilding.com

Part 1



CUSTOMIZED BUILDINGS

Products & Services

www.cbcprefab.com
www.prefabuilding.com

All kinds of steel structure related
prefab house, Turn-Key solution
provider.



The world is changing, and we are changing too. We are combining:

- Eco-friendly prefab building system
- Solar power system
- Eco-friendly prefabricated home decor materials(to achieve ZERO construction work on site)

All above together, it's our Building Solutions Package.



Contact us for **customized design** of solar energy system for your house!

Tell us your house's energy consumption



We design a powerful solar system for your house



Correct solar panels quantity which will generate full power for your house.



A power ful inverter to support all loads in your house.






Battery storage to cover all your night use power.

Professional customized design for **Off Grid System** **On Grid System** **Hybrid System**





CBC-5KW 12hrs Off Grid Solar Power System Power supply time: 8-12hrs at night Suitable For Daily Power Consumption: >28.8KWH; Allowable Max Loads Power: 5KW/7KVA				
Model	Picture	Description	Advantage	Qty
Mono 400W		Voltage:36V Weight:19.41KG Size:1730*1020*35 mm	22% Transfer Efficiency 25 Years efficiency warranty 15 Years material warranty	12P CS
Combiner		4T-96V Multiple PV strings inputs max circuit voltage: 500V	Wide Range of DC Input Voltage, Thunder and Lightning Protection 2Years Warranty	1P C
Solar controller & inverter		Rated Power:5KW DC voltage:96V AC Output :110V/220V MPPT Solar Charge: 60A	AC grid charger build-in Japan IGBT material 3Years Warranty	1P C

Optional Battery		12V200AH Service Life:5-6 Years, Size:522*240*219mm	Germany Technology 2Years Warranty AGM Maintenance-Free Gel Battery	8P CS
		96V200AH Service Life:10-12 Years, Size:600*600*1200mm Weight:152KG	Germany Technology Including BMS 3Years Warranty Lifepo4 Battery	1P C
Bracket		Rooftop / Ground Install Customized, Including All Parts	10years warranty	1S ET
PV Cables/ Battery Cables/ Connetor		1)7pcs 16mm2*35CM,2pcs 16mm2*2M battery cable, 20M 16mm2 cable with battery terminal. 2)4mm2 PV cable 100M 3)2P 63A Battery switch and box	Professional processed battery cable. 10years warranty	1S ET
Full set: Total volume: 3.5CBM Total weight: 930KG				





CBC-10KW12hrs Off Grid Solar Power System				
Power supply time: 8-12hrs at night				
Suitable For Daily Power Consumption: >57.6KWH Allowable Max Loads Power: 10KW/14.3KVA				
Model	Picture	Description	Advantage	Qty
Mono 400W		Voltage:36V Weight:19.41KG Size:1730*1020*35mm	22% Transfer Efficiency 25 Years efficiency warranty 15 Years material warranty	24PCS
Combiner		6T-96V Multiple PV strings inputs max circuit voltage: 500V	Wide Range of DC Input Voltage, Thunder And Lightning Protection 2Years Warranty	1PC
Solar Controller & Inverter		Rated Power:10KW DC voltage:96V AC Output :110V/220V MPPT Solar Charge: 100A	AC Grid Charger Build In Japan IGBT Material 3Years Warranty	1PC

Optional Battery		12V200AH Service Life:5-6 Years, Size:522*240*219mm	Germany Technology 2Years Warranty AGM Maintenance-Free Gel Battery	16PCS
		96V400AH Service Life:10-12 Years , Size:600*600*1800mm Weight:300KG	Germany Technology Including BMS 3Years Warranty Lifepo4 Battery	1PC
Bracket		Rooftop / Ground Install Customized, Including All Parts	10years warranty	1SET
PV Cables/ Battery Cables/ Connector		1)14pcs 16mm2*35CM,4pcs 16mm2*2M battery cable, 20M 16mm2 cable with battery terminal. 2)4mm2 PV cable 150M 3)2P 63A Battery switch and box	Professional processed battery cable. 10years warranty	1SET
Full set: Total volume: 5.3CBM Total weight: 1900KG				



CBC-20KW12hrs Off Grid Solar Power System---
Power supply time: 8-12hrs at night
Suitable For Daily Power Consumption: >115.2KWH Allowable Max Loads Power: 20KW/28KVA

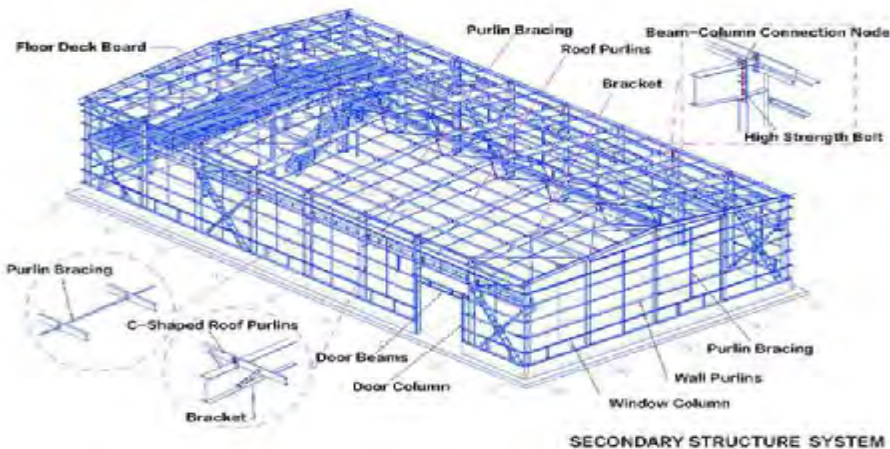
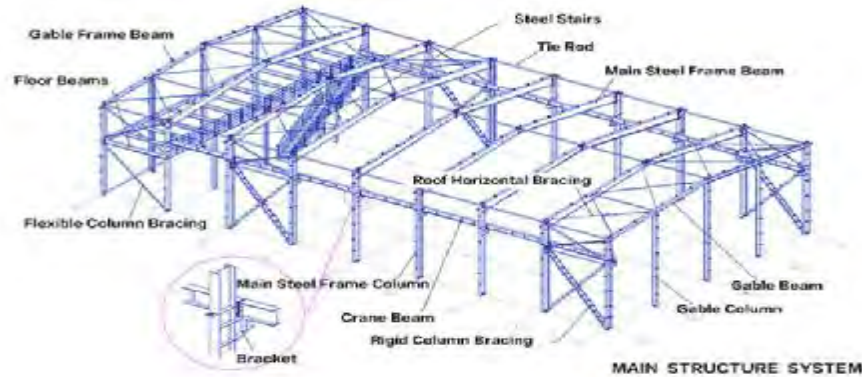
Model	Picture	Description	Advantage	Qty
Mono 400W		Voltage:36V Weight:19.41KG Size:1730*1020*35mm	22% Transfer Efficiency 25 Years efficiency warranty 15 Years material warranty	48PCS
Combiner		6T-192V Multiple PV strings inputs max circuit voltage: 500V	Wide Range of DC Input Voltage, Thunder And Lightning Protection 2Years Warranty	1PC
Solar Controller (GBT)		Solar Charge Current: 100A Voltage:192V	IGBT Solar Charge 2Years Warranty	1PC
Inverter (IGBT)		Rated Power:20KW DC voltage:192V AC Output :110V/220V	AC Grid Charger Build-In Japan IGBT Material 3Years Warranty	1PC

Optional Battery		12V200AH Service Life:5-6 Years, Size:522*240*219mm	Germany Technology 2Years Warranty AGM Maintenance-Free Gel Battery	32P CS
		192V400AH Service Life:10-12 Years, Size:1200*600*1200mm Weight:584KG	Germany Technology Including BMS 3Years Warranty Lifepo4 Battery	1PC
Bracket		Rooftop / Ground Install Customized, Including All Parts	10years warranty	1SET
PV Cables/ Battery Cables/ Connect or		1)30pcs 16mm2*35CM,4pcs 16mm2*2M battery cable , 20M 25mm2 cable with battery terminal. 2)4mm2 PV cable 200M 3)2P 63A Battery switch &box	Professional processed battery cable. 10years warranty	1SET
Full set: Total volume: 10CBM Total weight: 3660KG				



CBC steel structure is the most economical, safe and easy erecting solution for your warehouse, shopping mall, school, hospital, hotel, manufactory, apartment, distribution center, poultry...and many other projects. CBC provides you below services as well as

④ Manufacture:



① Architectural Design

② Shop Drawing & Installation Drawing

③ Installation guidance

CBC applies most advanced machines(Heyes) and software(FrameCAD) to produce light steel villa, Which are from New Zealand. the steel channels are automatically bended, sheared, punched and print marked, accuracy is $\pm 0.5\text{mm}$, CBC provides also whole package for large projects including insulation, cladding, sanitary, door, window, electricity plumbing, floor...

The Advantages of CBC Light Steel Villa:

- Suitable for extreme climate, can endure 9 grade seismic, 12 grade hurricane, 1500mm snow load
- Moisture-proof and great ventilation design
- Long lifespan up to 50 years
- Dry construction and recyclable building materials, environment-friendly
- Short construction period, saving up to 50% construction time

Applied Sectors of CBC Light Steel Villa:

- Residential Villa
- Apartment
- Hotel
- Resorts
- School





CBC container house is a kind of modular flat-pack house, consisting of light steel frame and thermal insulation material. It is a new type of energy saving and environmental temporary house which is easy to install. CBC container house is CE certificated.

The Options of CBC Container House:

- Disassembled low cost container houses
- Pre-assembled flat pack container house

Applied Sectors of CBC Container House:

- Mining or construction camp
- Public facilities (shower room, toilet or laundry)
- Apartment or hotel with toilet
- Other functional sectors (cool room or equipment room)
- Affordable housing projects





Affordable House

CBC affordable home is made by light steel frame and thermal insulation material. It's cost saving and time saving. It is widely used for construction sites, temporary residence, shower room, kitchen, office, etc.

CBC can also offer different decorations to make the house fashionable and comfortable.

CBC provides also Turn-Key package for your one stop solution

The Advantages of CBC Eco Home:

- Easy installation: 4-6Sqm per man-day, required very simple equipment and foundation.
- Excellent insulation: considering the cost, the insulation of affordable panel house is excellent. CBC offers more than three options as per your detailed requirement for different projects.
- Multiple options: Very flexible space design, plenty choices for color and decoration, from low cost to luxury facilities available...





Wooden House

CBC has excellent processing equipment, uses imported Russian pine or Canadian SPF as raw materials, follows philosophy of "achieving an ideal ecological homeland", to build a healthy, comfortable, energy saving, and ecological high quality wooden building for our domestic and foreign customers.



Part 2



CUSTOMIZED BUILDINGS

Company Overview

www.cbcprefab.com
www.prefabuilding.com

Professional architect, structural and production engineer team. 10+ Years' with 500+ oversea project experiences.



**CUSTOMIZED
BUILDINGS**

Company Overview

Hangzhou Xixi Building CO., LTD is a building solutions provider from China, based in Hangzhou since 2017, but our main staff have at least more than 10 Years working experiences in this industry and always being focused in oversea market. We are providing(Plus our capacity):

- Steel structure: 1000 tons per month
- Light steel house: 30,000sqm per month
- Container house: 850 units per month
- Other building materials: 450,000sqm peel & stick wall panels per month
- Architectural design services: to meet with local regulations

Our website: www.cbcprefab.com / www.prefabuilding.com

Contact us for more information:

Mr. Cancan Kang(Principal owner)

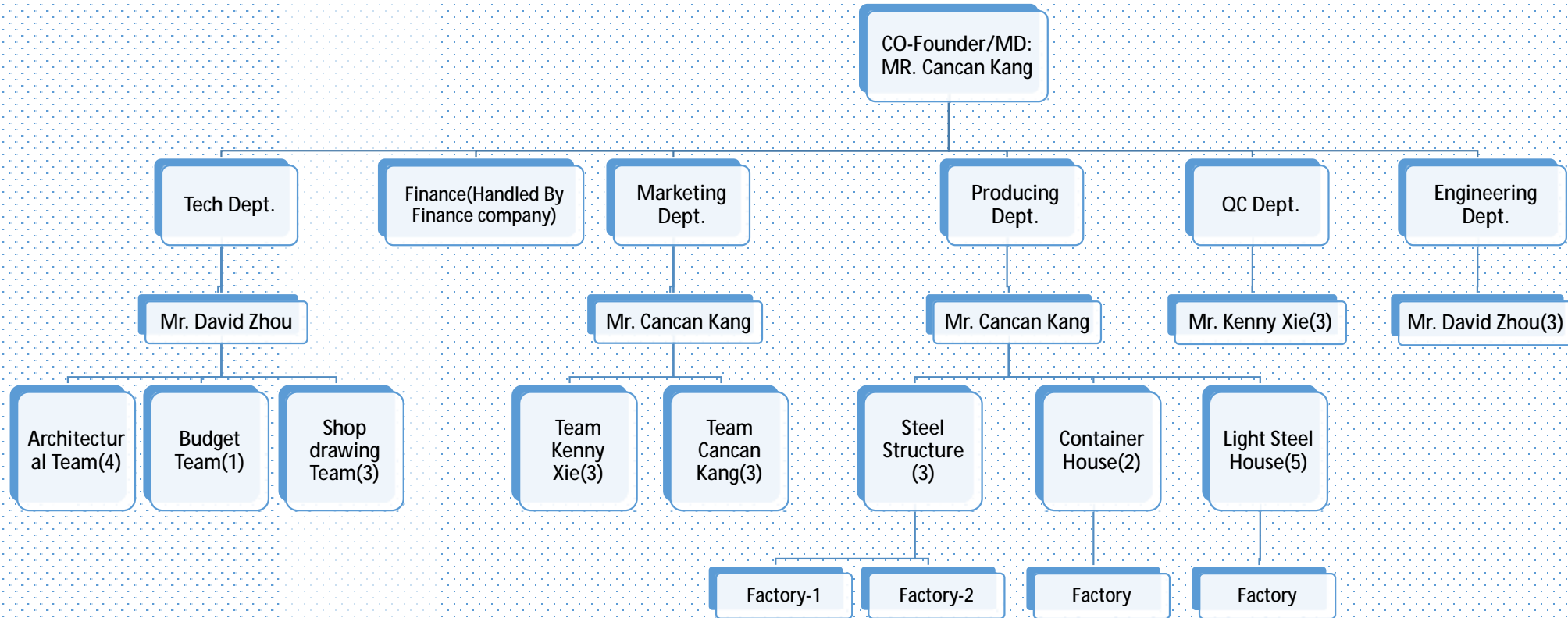
Cell Phone & WhatsApp & Viber: 008613757163354

Email: cancancbc@qq.com

Add.: 20th Floor, Xinyi Guangchang, Xiaoshan, Hangzhou, Zhejiang



Organizational structure





**CUSTOMIZED
BUILDINGS**

BIM System

CBC's design and research activity applies BIM system and Autodesk Revit software. Based on relevant information and requirements of the project, we establish building model to simulate the real information about the building through digital information simulation. What's more, we can easily present details and 3D renderings of our company's products to all clients.

Our architecture and engineer team is young, professional, efficient and ambitious, will provide you most timely, economical and trouble-less services and proposals





**CUSTOMIZED
BUILDINGS**

Manufacture

CBC share-holding a top qualified factory in Zhejiang Province. We can provide 1,000+ Tons steel structure warehouse and 30,000+ sqm LGS house and 850 units container house per month. CBC has also very strong sourcing team for other steel related products, can package an integrated solution for your projects.



CBC Manufactory



Part 3



CUSTOMIZED BUILDINGS

Project Showcase

www.cbcprefab.com
www.prefabuilding.com

By June 2021, Up to 1000 projects in more than 100 countries managed or participated by our team members



**CUSTOMIZED
BUILDINGS**

Project Showcase

Project location: Indonesia

Project time: 2021.11-Ongoing

Category: Accommodation
Camp

Product type: Container House

Project scale:

288 staff rooms with ensuites

Project feature: 8 Staff
accommodation buildings for PT.
Merdeka Copper Gold.

Each block in three floors, 12
rooms with ensuites in every
floor, 36 rooms combine into
one block.

CBC designs, provides all
materials, accessories, facilities
within two months.





**CUSTOMIZED
BUILDINGS**

Project Showcase

Project location: Indonesia
Project time: 2022.01-Ongoing
Category: Accommodation Camp
Product type: Container House
Project scale:
480 staff rooms with ensuites
Project feature: 6 Staff
accommodation buildings for
AMMAN.
Each block in two floors, 40 rooms
with ensuites in every floor, 80
rooms combine into one block.
CBC designs, provides all materials,
accessories, facilities. All pods
customized for our client.

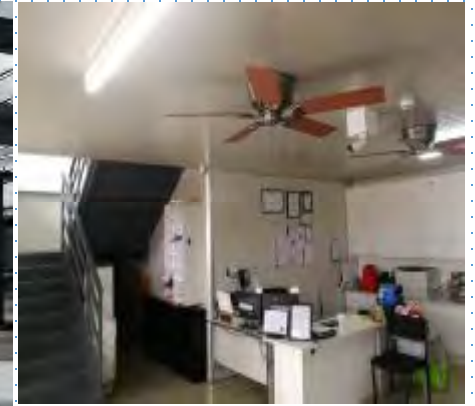




**CUSTOMIZED
BUILDINGS**

Project Showcase

Project location: Clark,
Philippines
Project time: 2017.7-2018.11
Category: Steel workshop
Product type: Steel structure
Project scale:
Total construction area 3650
m² with mezzanine.
Project feature: It is a
workshop for SG Eco in
Philippines, with mezzanine in
west and south sides. With
skylight. We have very good
relationship with local
construction team so we
finished this project with in
four months including
fabrication, shipping, erection.





**CUSTOMIZED
BUILDINGS**

Project Showcase

Project location: Virgin Island
Project time: 2013.6-2014.12
Category: Distribution center
Product type: Steel structure building
Project scale: Over 10000m²
Project feature: It was the first time to undertake a large logistics center. But we had a very good solution in order to full fill the requirements such as warehousing, logistics and stream of people.





**CUSTOMIZED
BUILDINGS**

Project Showcase

Project location: Tonga
Project time: July 2017
Category: Warehouse
Product type: Steel structure
Project scale: Total construction area 2300m²
Project feature: Large span warehouse, heavy wind loading. With also fiber glass roof insulation. With roof skylight.





**CUSTOMIZED
BUILDINGS**

Project Showcase

Project location: Mozambique
Resort

Project time: 2013.6-2014.2

Category: Resort hotel project

Product type: Light steel building

Project scale: 49 sets, 8000m²

Project feature: There are only a few hotels, not to mention boutique hotels in resort areas, so it is difficult to satisfy the tourists' accommodation needs. The boutique hotel project has filled up the blank of local resort hotel market.

This project was located near the beach of the Atlantic sea, target is to provide service for European and Chinese tourists.





**CUSTOMIZED
BUILDINGS**

Project Showcase

Project location: Reunion Island
Project time: Sep. 2017
Category: Residential houses
Product type: Light steel structure
Project scale: Three units, 450m²
Project feature: The project uses G550 LGS frame, combined with ACP panels for wall and glass insulation as a maintenance system.
Heavy wind loading, all pre-assembled LGS frame to save client's installation time.





**CUSTOMIZED
BUILDINGS**

Project Showcase

Project location: Philippines
Project time: Nov. 2017
Category: Residential community
Product type: LGS house
Project scale: 10 sets
Project feature: This is a project for local resort owner BBL, as accommodation and other public service houses for the whole resort.





Project Showcase



Project Name	Perth Project
Finished Time	Year 2015
Project Place	Perth AU
Building Area	268 Sq.m
Project Description	Design and fabrication, one stop solution including all AU standard facilities.



Project Name	Chile Project
Finished Time	Year 2017 ongoing
Project Place	South Chile
Building Area	1138 Sq.m
Project Description	Ten units each two floors, five connected in one row, very good design and excellent insulation for local cold weather.

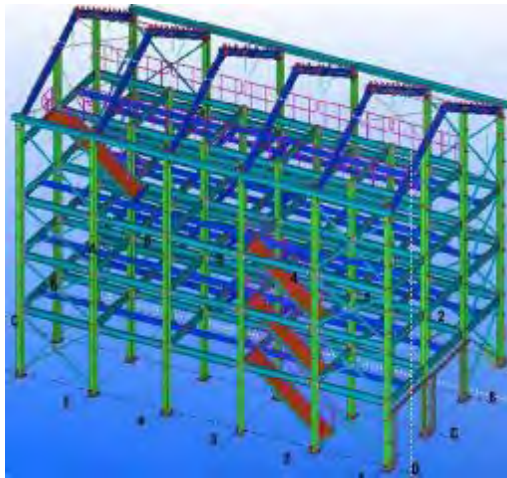


Project Showcase

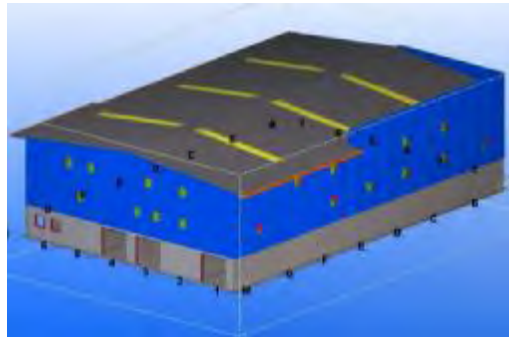
	Project Name	Number 1 Homes House project
	Finished Time	Year 2015, June
	Project Place	Christchurch NZ
	Building Area	245 S.qm
	Project Description	We design and provide one stop solution for this house including custom made sanitary, kitchen. All meet with AU standards. Refer to: https://www.facebook.com/number1homes/
	Project Name	Perth Project
	Finished Time	Year 2016
	Project Place	Perth AU
	Building Area	308 S.qm
	Project Description	Design and fabrication, one stop solution including all AU standard facilities.



Project Showcase



Project Name	Alain's warehouse
Finished Time	Year 2018 ongoing
Project Place	New Caledonia
Building Area	1150 S.qm
Project Description	Five floors steel structure warehouse building with elevator, heavy wind loading.



Project Name	Le Tigre Warehouse
Finished Time	Year 2018 ongoing
Project Place	New Caledonia
Building Area	3158 S.qm
Project Description	Three floors, with lift and ramp for track, heavy floor loading, wind load 275km/h, all HDG steel structure.



	Project Name	AES warehouse project
	Finished Time	Year 2013-2018
	Project Place	POM, PNG
	Building Area	2400 S.qm each
	Project Description	Same design in around 2400S.qm each, till now total 8 units
	Project Name	PNG Concrete warehouse
	Finished Time	Year 2014-2018
	Project Place	POM, PNG
	Building Area	2700 Sq.m
	Project Description	Six Miles development, total 6 units each around 2700S.qm, till now total building area 16000S.qm



Project Showcase



Project Name	SCPA workshop
Finished Time	Year 2016
Project Place	Manila Philippines
Building Area	2600 Sq.m
Project Description	Design and fabrication, built in heavy corrosion area



Project Name	Sand factory
Finished Time	Year 2018
Project Place	Clark, Philippines
Building Area	1200 S.qm
Project Description	Steel structure shed for a sand factory in Clark, will build more in near future



**CUSTOMIZED
BUILDINGS**

Hangzhou Xixi Building Co., LTD.
希希建筑



Contact: Mr. Cancan Kang
Managing Director
Phone & WhatsApp: +8613757163354
QQ & WeChat: 66048573
Skype: cancankang
E-mail: cancancbc@qq.com
kangkang_zju@sina.com
Website: www.cbcprefab.com
www.prefabuilding.com